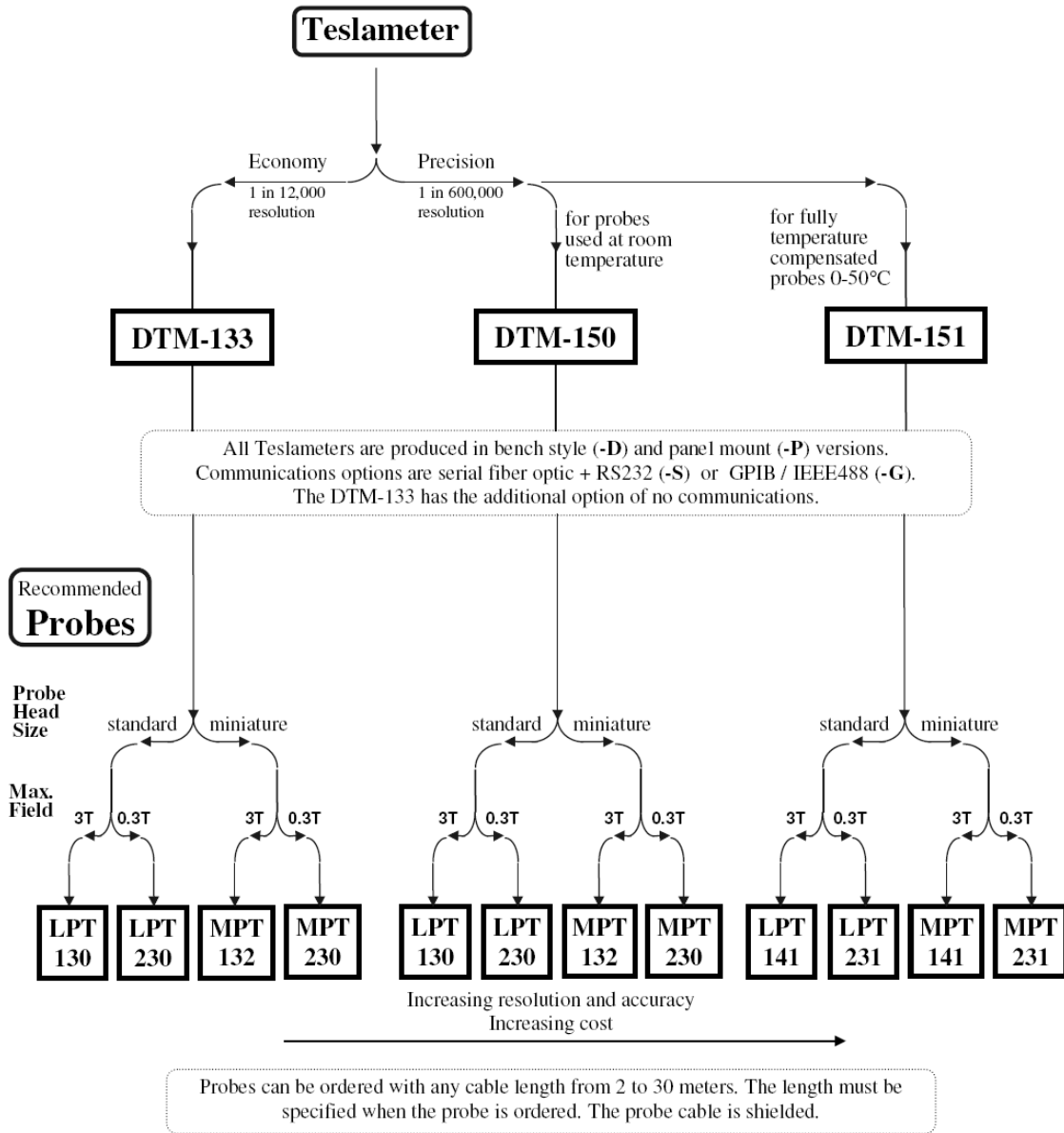


GROUP3 **Teslameter Selection Guide**



Please note: while the top range of Group3 teslameters is 3 tesla, in fact the probes are calibrated to a maximum field of ± 2.2 tesla. The instrument will read above 2.2 tesla, but with unspecified accuracy.

Resolution figures shown are relative to the full bipolar span of the instrument.